

# US Domestic Made Products



ASC Engineered Solutions™ offers many products that meet requirements and industry standards outlined by domestic preference programs, such as Buy America, Buy American, and AIS. Our domestic production capability allows us to give you – and your customers – the reliability and confidence of knowing we will always meet specification requirements with the highest quality offerings.

ASC Engineered Solutions is the only supplier of grooved products able to provide a domestically produced complete grooved steel system through 24 inches in size.

US domestic made product programs\*:

- [Buy America](#)
- [Buy American](#)
- [American Iron and Steel Act \(AIS\)](#)
- [Steel Products Procurement Act](#)

\* Due to ever changing compliance requirements, certification must be requested at placement of order.

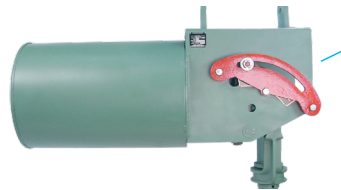


## Grooved

Complete portfolio of grooved couplings, fittings & valves.

## Engineered Pipe Supports

Spring hangers, constant supports, vibration control sway braces & snubbers.



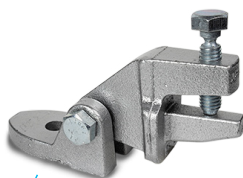
## Pipe Fittings

Unmatched breadth of threaded, socket weld, flanged and plain-end fittings.



## Seismic Solutions

Seismic bracing & hanger solutions.



## Pipe Nipples & Couplings

Leading brand of high quality nipples & couplings in standard length, ready-cut, and assortment packs in all schedules.



## Pipe Hangers

Beam clamps, pipe hangers, pipe clamps, pipe rollers, & pipe supports.



[asc-es.com](http://asc-es.com)

Building connections that last™

# Design and Software Services



## Seis Brace® Software – Leader in Seismic Bracing Design Software

The most comprehensive seismic bracing calculation software in Fire Protection. Seis Brace ensures compliance to NFPA 13, with its intuitive and user friendly format. The end result is a complete submittal PDF package with all calculations and submittal sheets included. Features include:

- Detailed calculations in accordance with NFPA 13, 2016 / ASCE7-10 and 2019 / ASCE7-16

## Design Services & Fabrication

Our design services team can provide a design analysis at no charge:

- Conceptual drawing(s) with BOM
- Documented potential savings capacity
- Prying factors of Anvil products to maximize swivel component
- Quotation for fabrication services

Typical design review results in reduction of fittings used by 10–15%.

- Three methods to calculate and optimize your Seismic Coefficient ( $C_p$ )
- Pipe selection by manufacturer for more accurate load calculation
- Anchor selection by manufacturer to maximize structural attachment capacity
- Prying factors of Anvil products to maximize swivel fitting load ratings
- UL or FM loads to comply with project specifications

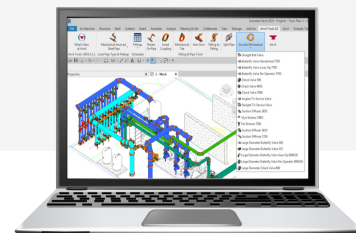
More savings can be generated with the availability to move equipment as needed for optimal design. Extended fee services are also available.

- Full fabrication drawing
- Fully dimensional and tagged BOM
- On site, field survey for retro fit projects
- Dimensioned floor penetrations

At ASC, we offer tools and custom design services to help your team build better and smarter. All BIM and CAD content is available online in our BIM/CAD content library.

### Designing with Anvil Tools™

- Anvil Tools plug-in for Autodesk's Revit software
- Easily load Anvil and Gruvlok products into a Revit Project
- Design with smart pipe routing and fitting families
- Save time by automating and enhancing mechanical workflows
- Simplified tagging, scheduling, and spool sheet creation



Please contact your local ASC Engineered Solutions sales representative.



asc-es.com

Building connections that last™